



THE
CHALLENGE

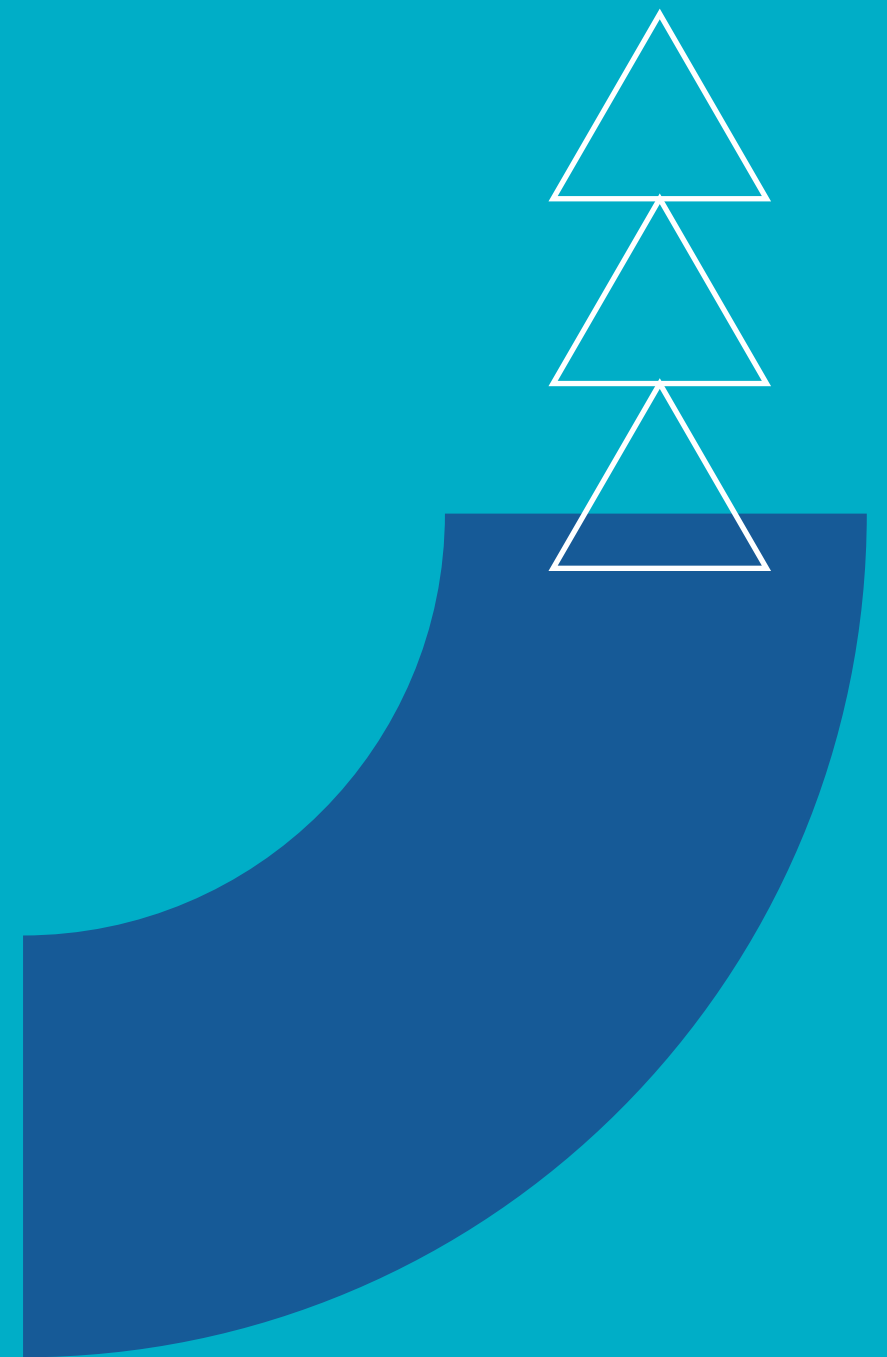
SE DIVER





A 3.1 KILOMETER TRANSMISSION LINE AT 70 METERS ABOVE SEA LEVEL

In the 1970s, Turkish electric utility started construction on a 380 kV line across the Bosphorus to connect a power plant in on the Asian side of Turkey to the European side. The Bosphorus is a particularly busy shipping route. For safety reasons, the conductors had to be at least 70 meters above sea level over a span of 3.1 kilometers.



SEDIVER



SEDIVER

SE DIVER



OUR SOLUTION

We first designed our 530 kN high strength toughened glass insulators for this project. Since this landmark project, Sediver has innovated insulators with very high mechanical resistance for many other river crossings around the world. **Our product lineup now includes insulators with mechanical strengths of up to 835 kN, even for DC.**

