



THE CHALLENGE

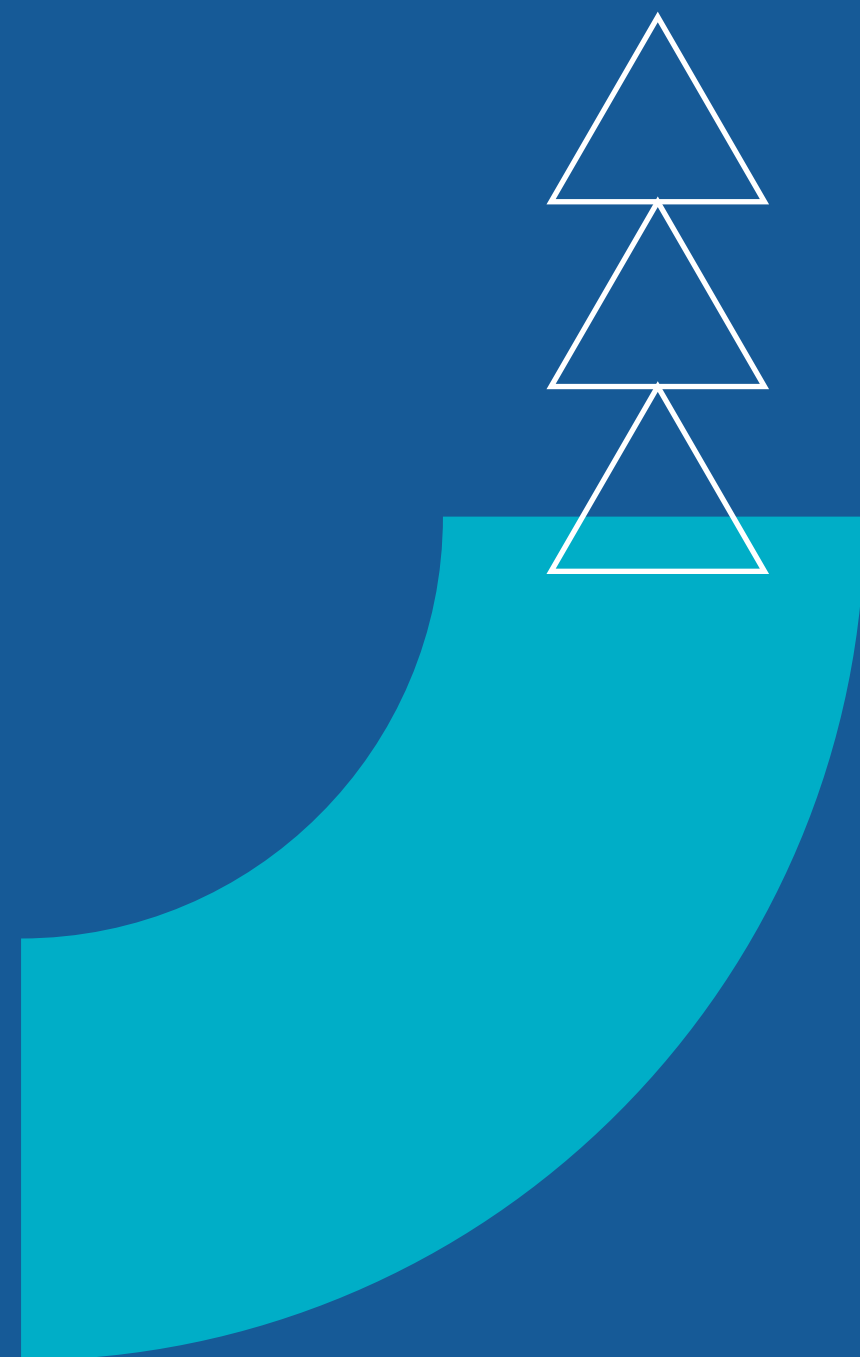
SEEDIVER



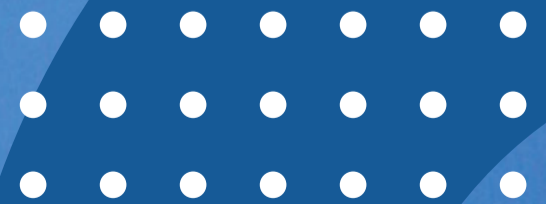
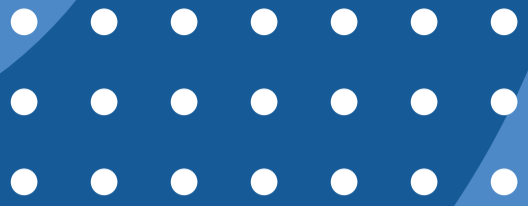


FLASHOVERS DUE TO ICE BRIDGING IN COLD CLIMATES

Our customer in Canada was experiencing an issue called ice bridging, when polluted icicles melt, creating vertical “bridges” between insulators that can cause flashovers. Extensive testing determined that the optimal solution would be to alternate different insulator diameters on each vertical string.

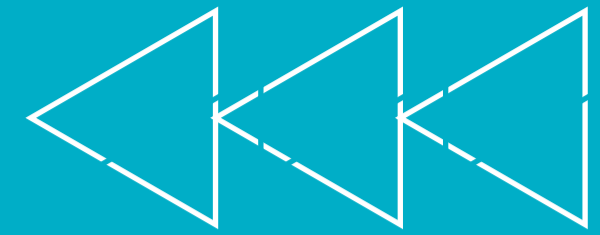


SEDIVER



SEDIVER

SEEDIVER



OUR SOLUTION

The large diameter of our open profile glass shells was used advantageously, alternating with shed profile insulators to effectively double the icicle length needed to create a "bridge." The solution has proven effective for more than 25 years of service.

