

Which of these possible sources of solid pollution is the odd one out?

a Marine pollution

b Wildlife

c Rain

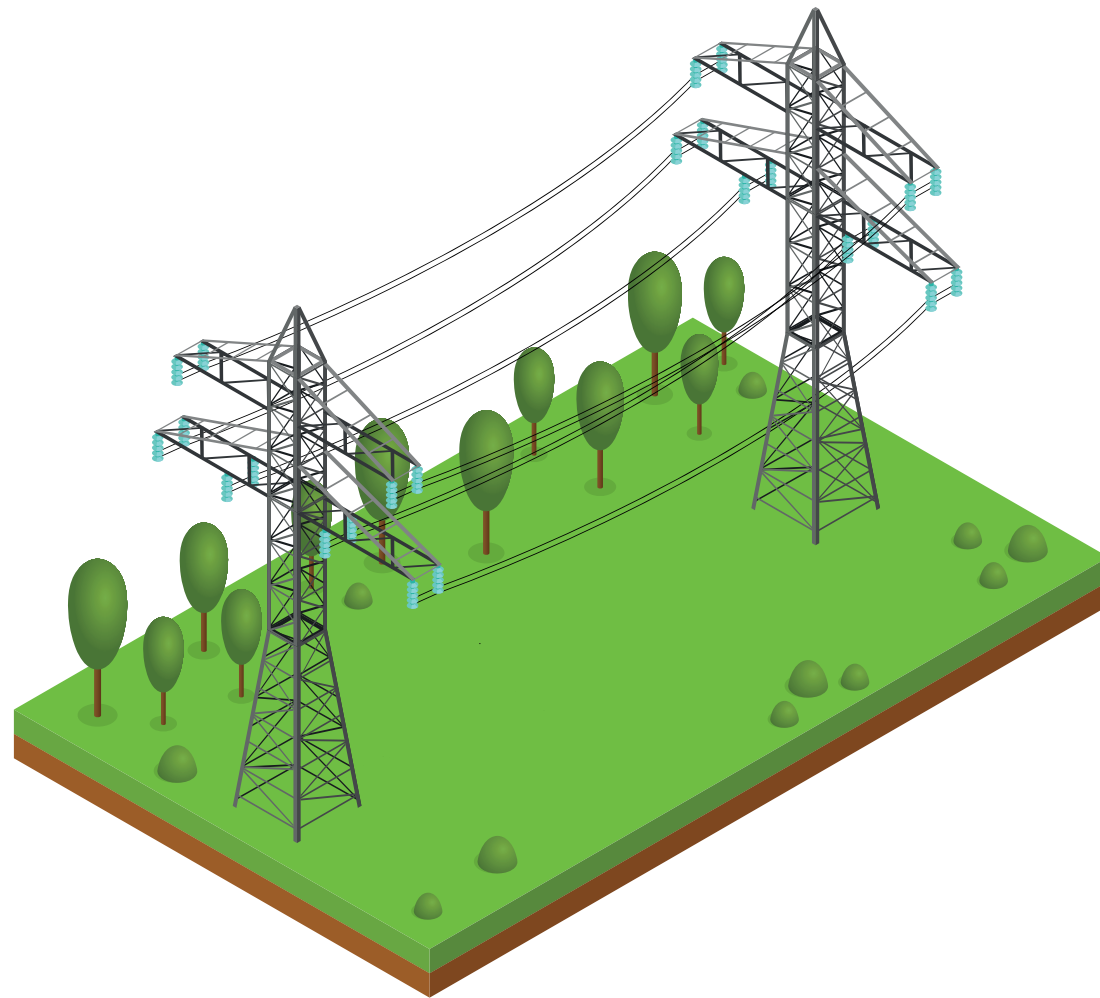
Which of these possible sources of solid pollution is the odd one out?

a Marine pollution

b Wildlife

Rain

What do we call solid pollution?

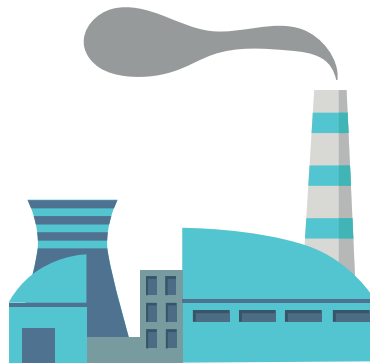


All the elements which can **deposit over the surface of the insulator** and have an **impact on the performance** of the string

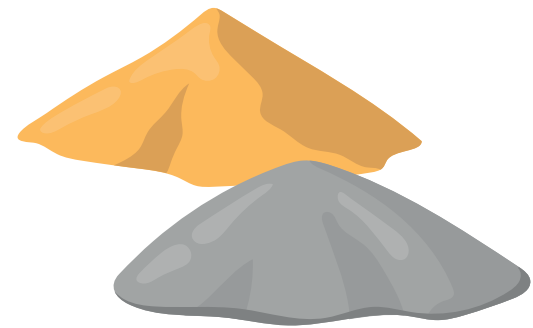
Which type/source of solid pollution exist?



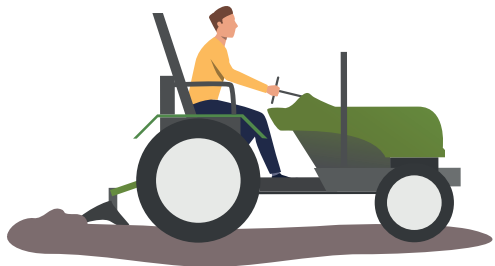
MARINE
POLLUTION



INDUSTRIAL
DEPOSITS



SAND
DUST



AGRICULTURAL
DEPOSITS



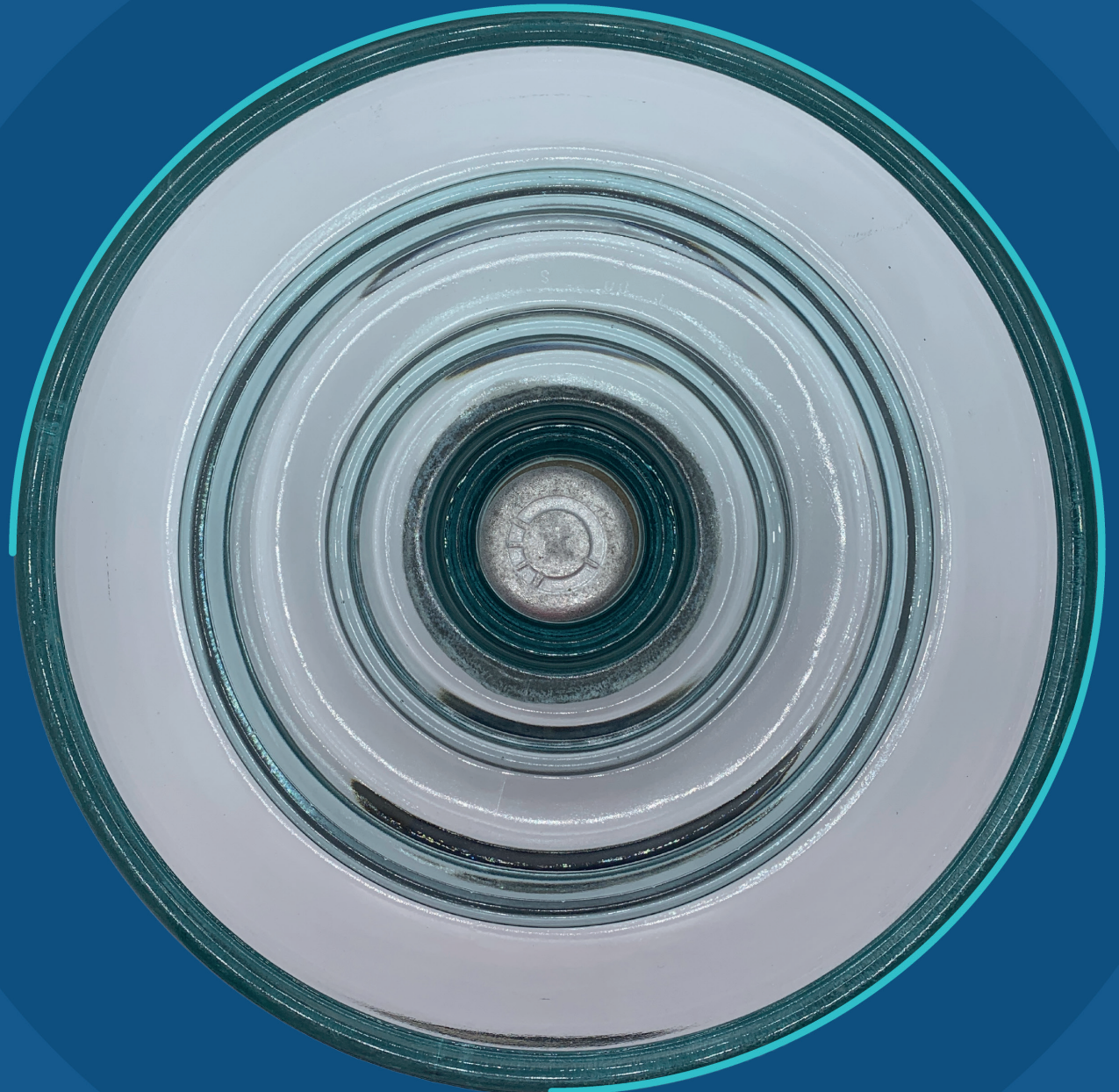
WILD
LIFE



MELTING ICE
AND SNOW

TECHNICAL WEBINAR

INSULATION SOLUTION
FOR POLLUTED
ENVIRONMENTS
5TH OCTOBER 2023



SEDIVER