

NSDD is the acronym for?

**(a) Natural Source
of Dust Deposit**

**(b) Non-Salty
Dissolved Density**

**(c) Non-Soluble
Deposit Density**

NSDD is the acronym for?

a

**Natural Source
of Dust Deposit**

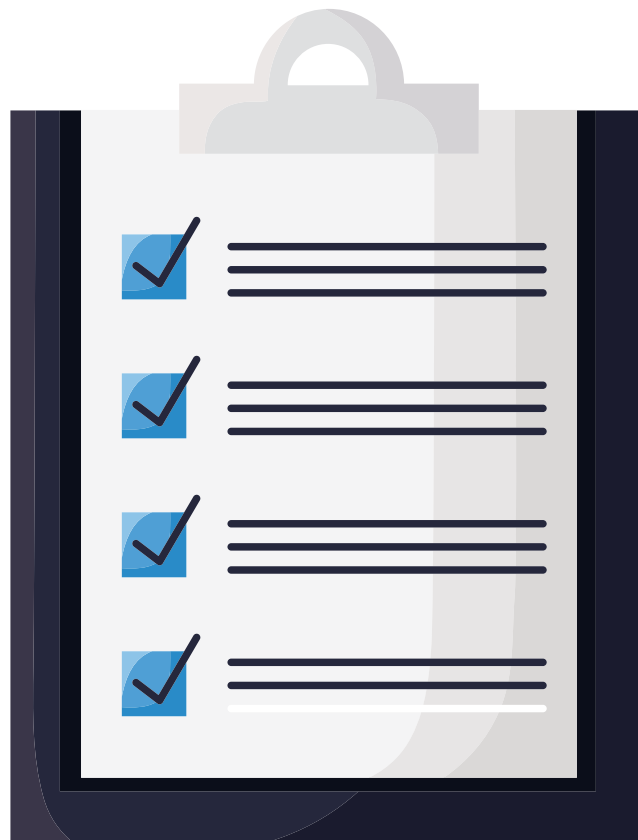
b

**Non-Salty
Dissolved Density**



**Non-Soluble
Deposit Density**

HOW DO WE COMMONLY MEASURE POLLUTION LEVELS?



The **evaluation of the insulator pollution level** in any given area can be made by **washing its surface** with deionized water and **measuring both NSDD and ESDD.**

NON-SOLUBLE DEPOSIT DENSITY



NSDD

It corresponds to the amount of **deposit** on the surface of the insulator which **does not dissolve in water and remains inert on the surface.**

EQUIVALENT SALT DEPOSIT DENSITY



ESDD

It represents the **quantity of salt** required to achieve the conductivity reached by the pollutant dissolved in the water.

TECHNICAL WEBINAR

INSULATION SOLUTION
FOR POLLUTED
ENVIRONMENTS
5TH OCTOBER 2023



SEDIVER